

**Do your investments reflect
your faith-based values?**

Meet the Smiths

The Smiths volunteer at a
pro-life pregnancy center



The Smiths own Johnson &
Johnson in their IRA



 **-100**
inspire impact

JNJ
Johnson & Johnson

-  **MANUFACTURES ABORTION DRUGS**
-  **SUPPORTS EMPLOYEE ABORTION TRAVEL**

*Data from inspireinsight.com as of 6/30/2024

Do you see the problem?

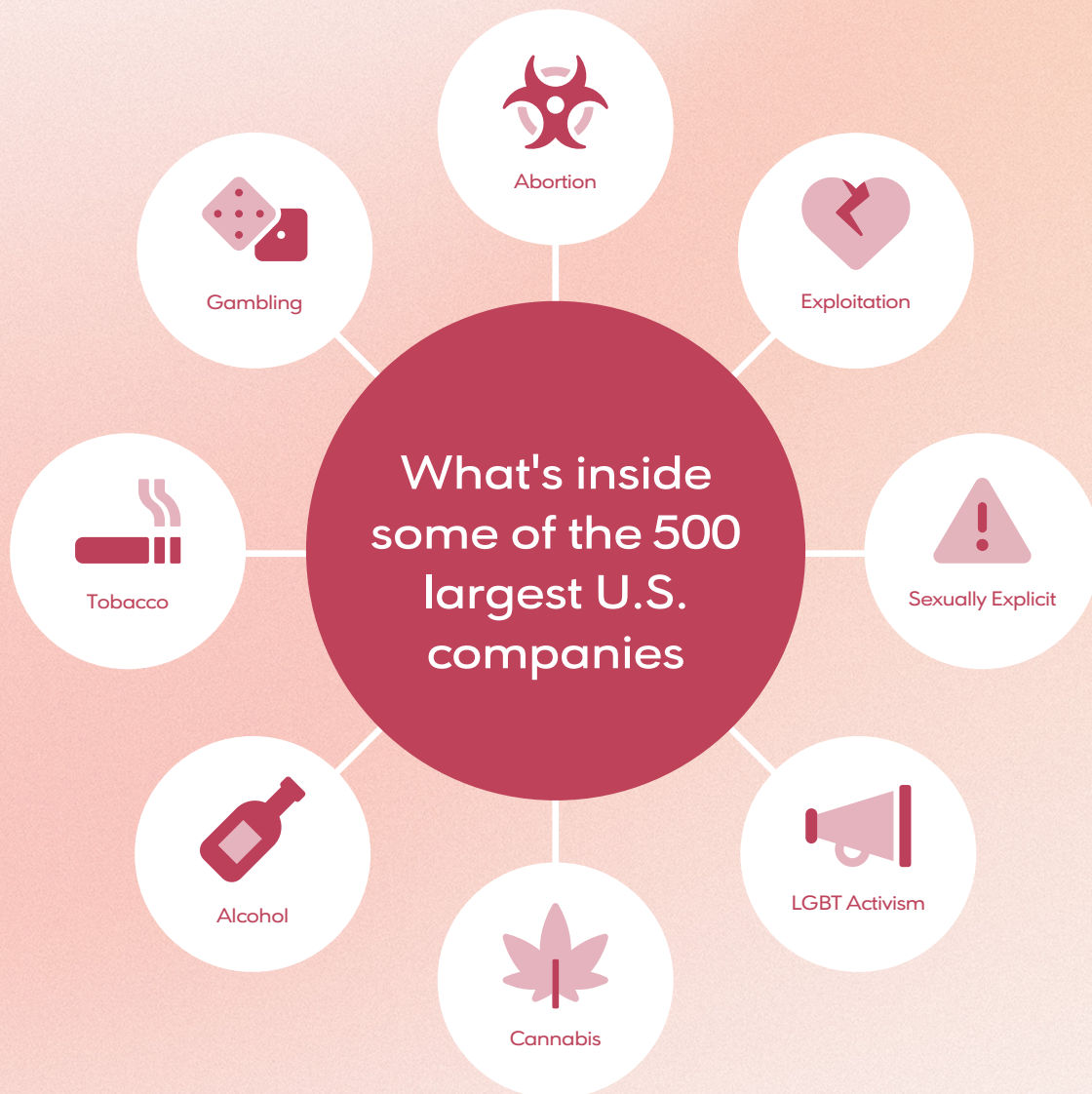
Faith-based investing is not just looking at the financial aspect of a company but also the moral aspect.

SO, WHETHER YOU
EAT ^{OR} DRINK
OR
WHATEVER
YOU DO, DO ALL TO THE
GLORY ^{OF} GOD
1 CORINTHIANS 10:31

If you can eat or drink to the glory of God,
you can certainly *invest to the glory of God!*

It's not just abortion...

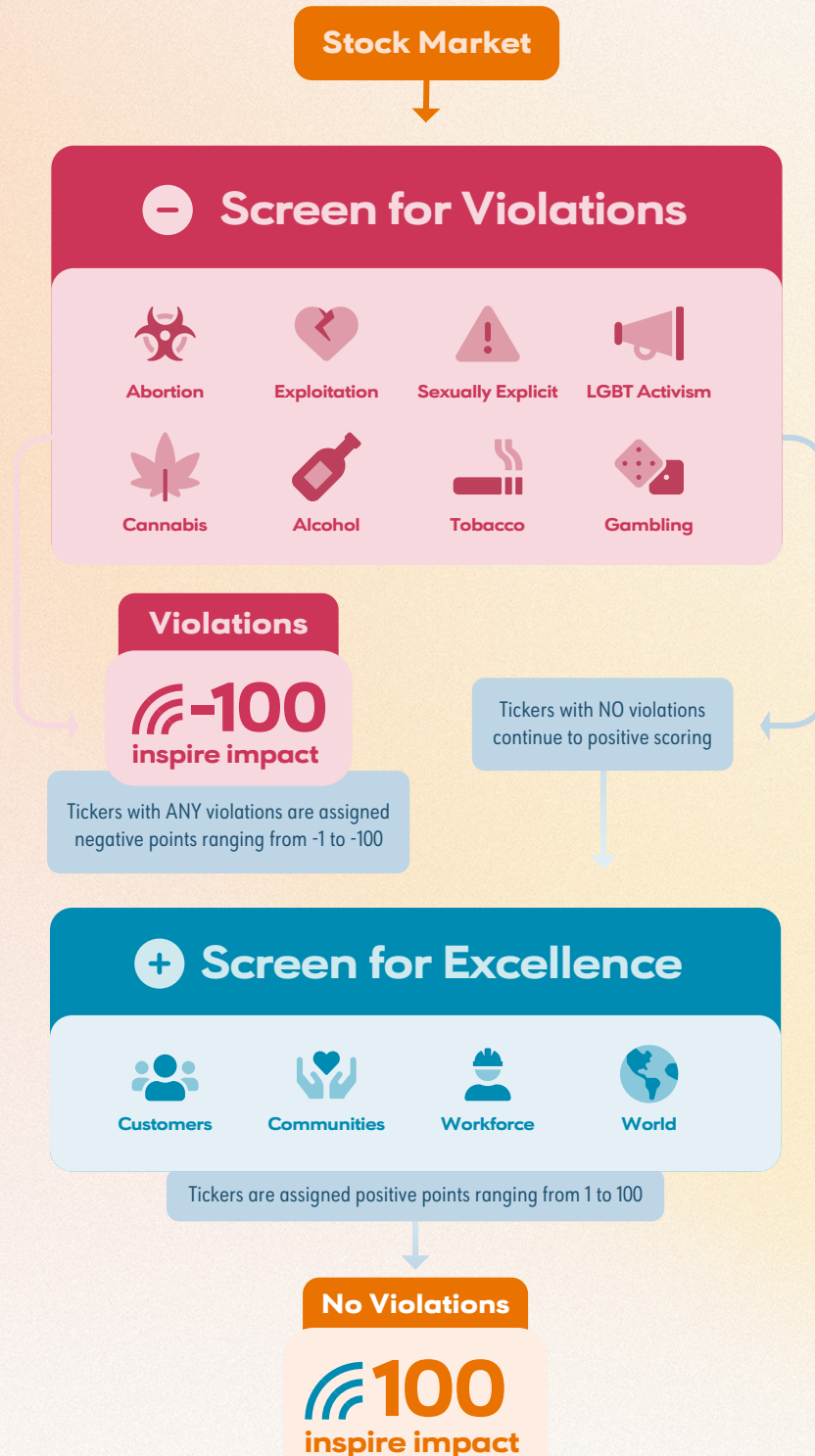
Many investors are surprised to learn they are profiting from and supporting these unbiblical activities within their investment portfolios.



But how would you even *know*?

Meet the Inspire Impact Score

The Inspire Impact Score is a simple, numerical score that rates companies based on their alignment with biblical values and the degree to which they operate as blessings to their customers, communities, workforce, and the world.

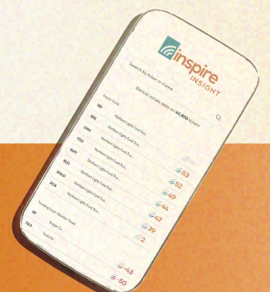
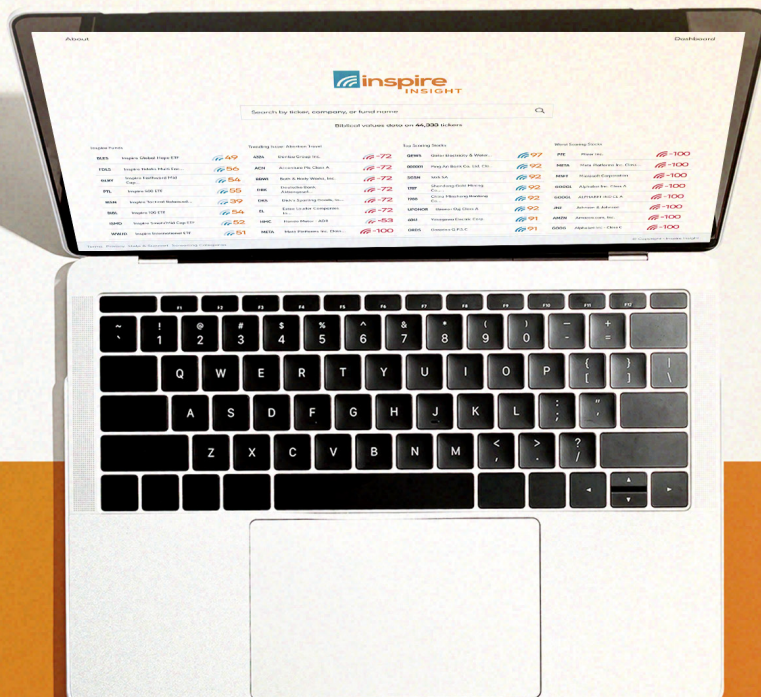


How do you think *your* investments will score?



Discover the *truth* about your investments today!

- 01 Visit inspireinsight.com
- 02 Search for stocks, mutual funds, and ETFs
- 03 Check the Inspire Impact Score
- 04 Talk with your financial advisor



Inspire Insight helps you find companies to invest in like:

Positive



Featured Company

CATERPILLAR

Ticker

CAT

About

A leading construction equipment, engines, turbines, and locomotives manufacturer.

Inspire Impact Score



And avoid companies like:

Negative



Featured Company

JOHN DEERE

Ticker

DE

About

An American manufacturer specializing in agricultural and construction equipment.

Inspire Impact Score



Impact Score provided by InspireInsight.com as of 6/30/24.

This content is for informational purposes only and is not investment advice. Investors should talk to their financial advisors before making any investment decision.



National Admin Office: 3597 E Monarch Sky Ln, Suite 330 Meridian, ID 83646; (877)658-9473; inspire@inspireinvesting.com

Investment advisory services offered through Inspire Investing, LLC, a Registered Investment Advisor with the SEC.

© Copyright - Inspire Investing